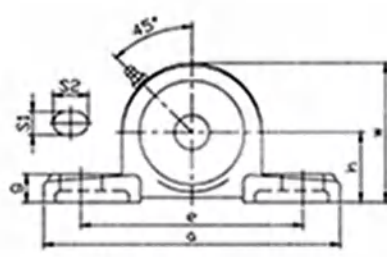
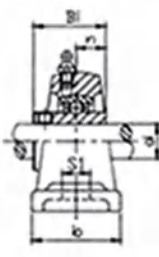
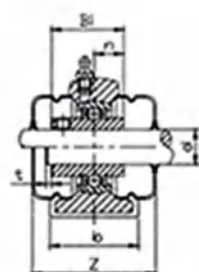

 UCP200 系列  
UCP200 SERIES

 S-UCP200 系列 S-UCP200 SERIES  
SM-UCP200 系列 SM-UCP200 SERIES


带座轴承型号 Bearing Unit No.	轴径 Shaft Dia d		基本尺寸 Dimensions (mm)											螺栓 Bolt Used		轴承型号 Bearing No.	轴承座型号 Housing No.	座重量 Housing Wt (kg)	
	(in)	(mm)	h	a	e	b	S2	S1	g	w	t	Z	Bi	n	(mm)				(in)
UCP201-8 202-9 202-10 203-11 UCP201 202 203	1/2 9/16 5/8 11/16	12 15 17	30.2	127	95	38	19	13	14	62	2	51	31	12.7	M10	3/8	UC201-8 202-9 202-10 203-11 UC201 202 203	P203	0.33
UCP204-12 UCP204	3/4	20	33.3	127	95	38	19	13	14	65	2	51	31	12.7	M10	3/8	UC204-12 UC204	P204	0.46
UCP205-13 205-14 205-15 205-16 UCP205	13/16 7/8 15/16 1	25	36.5	140	105	38	19	13	15	71	2	57	34.1	14.3	M10	3/8	UC205-13 205-14 205-15 205-16 UC205	P205	0.60
UCP206-17 206-18 206-19 206-20 UCP206	1-1/16 1-1/8 1-3/16 1-1/4	30	42.9	165	121	48	21	17	17	83	2	62	38.1	15.9	M14	1/2	UC206-17 206-18 206-19 206-20 UC206	P206	0.97
UCP207-20 207-21 207-22 207-23 UCP207	1-1/4 1-5/16 1-3/8 1-7/16	35	47.6	167	127	48	21	17	18	93	3	72	42.9	17.5	M14	1/2	UC207-20 207-21 207-22 207-23 UC207	P207	1.00
UCP208-24 208-25 UCP208	1-1/2 1-9/16	40	49.2	184	137	54	21	17	18	98	3	82	49.2	19.0	M14	1/2	UC208-24 208-25 UC208	P208	1.30
UCP209-26 209-27 209-28 UCP209	1-5/8 1-11/16 1-3/4	45	54	190	146	54	21	17	20	106	3	82	49.2	19.0	M14	1/2	UC209-26 209-27 209-28 UC209	P209	1.40
UCP210-29 210-30 210-31 210-32 UCP210	1-13/16 1-7/8 1-15/16 2	50	57.2	206	159	60	25	20	21	114	3	87	51.6	19.0	M16	5/8	UC210-29 210-30 210-31 210-32 UC210	P210	1.83
UCP211-32 211-33 211-34 211-35 UCP211	2 2-1/16 2-1/8 2-3/16	55	63.5	219	171	60	25	20	23	126	4	92	55.6	22.2	M16	5/8	UC211-32 211-33 211-34 211-35 UC211	P211	2.4
UCP212-36 212-37 212-38 212-39 UCP212	2-1/4 2-5/16 2-3/8 2-7/16	60	69.8	241	184	70	25	20	25	138	4	102	65.1	25.4	M16	5/8	UC212-36 212-37 212-38 212-39 UC212	P212	2.8
UCP213-40 213-41 UCP213	2-1/2 2-9/16	65	76.2	265	203	70	29	25	27	151	4	107	65.1	25.4	M20	3/4	UC213-40 213-41 UC213	P213	3.5
UCP214-42 214-43 214-44 UCP214	2-5/8 2-11/16 2-3/4	70	79.4	266	210	72	31	25	27	157			74.6	30.2	M20	3/4	UC214-42 214-43 214-44 UC214	P214	4.45
UCP215-45 215-46 215-47 215-48 UCP215	2-13/16 2-7/8 2-15/16 3	75	82.6	275	217	74	31	25	28	163			77.8	33.3	M20	3/4	UC215-45 215-46 215-47 215-48 UC215	P215	4.9
UCP216-50 UCP216	3-1/8	80	88.9	292	232	78	31	25	30	175			82.6	33.3	M20	3/4	UC216-50 UC216	P216	5.8
UCP217-52 UCP217	3-1/4	85	95.2	310	247	83	31	25	32	187			85.7	34.1	M20	3/4	UC217-52 UC217	P217	6.9
UCP218-56 UCP218	3-1/2	90	101.6	327	262	88	33	27	33	200			96.0	39.7	M22	7/8	UC218-56 UC218	P218	8.10